

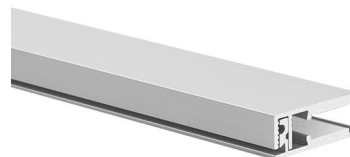
PRODUCT DESCRIPTION

- Easy and secure mounting to panel edges
- Convenient installation of LED strips
- Adapted for panels with a thickness of 5-6 mm

FINISH :

Silver anodized

*Custom colors available upon request



Fill empty fields

Product nr.

Fixture type

Company

Job name

Date

TECHNICAL SPECIFICATION

Application

- edge illumination of transparent and frosted panels

Assembly

- installation using self-adhesive tape and clasps

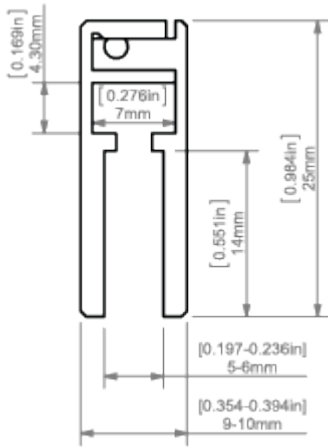
Additional information

- the extrusion is a lighting fixture, not a structural element
- space for LED strip: 7 mm

AVAILABLE LENGTHS

| Ref. nr. | surface finish | available lengths |
|----------------|-----------------|-------------------|
| 18017ANODAZM_1 | Silver anodized | 1000 mm |
| 18017ANODAZM_2 | Silver anodized | 2000 mm |
| 18017ANODAZM_3 | Silver anodized | 3000 mm |

TECHNICAL DRAWING



RELATED PRODUCTS

END CAPS

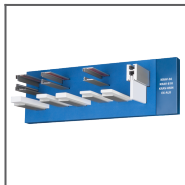


KRAV-56 grey End
cap
Ref: 24033

MARKETING MATERIALS



Display
P230-90177M
Ref: 90177M



Foam 70425
Ref: 70425



Presentation set 1
Ref: 90051