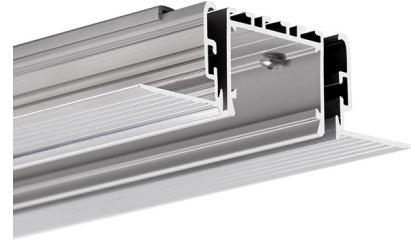


PRODUCT DESCRIPTION

- The openwork structure of the mounting channel and its adjustable elements (bridges) allow placing power supplies and other electronic devices on any section of the LED lighting fixture, eliminating the need for unsightly inspection openings in the ceilings
- The lighting fixture can be removed and remounted without damaging the mounting surface
- The fixture can be mounted "from below" allowing to build ceiling lighting fixtures that run "wall to wall"
- Linear and polygonal connections are possible with ZM connectors
- Secure mounting resistant to vibration
- The profile fits into the thickness of two pieces of drywall



FINISH :

Non anodized (raw) 

*Custom colors available upon request

Fill empty fields

Product nr.	
Fixture type	
Company	
Job name	
Date	

TECHNICAL SPECIFICATION

Application

- for the construction of professional lighting fixtures with a cover mounted flush with the ceiling or wall surface
- for LED lighting fixtures recessed in the ceiling, installed and serviced as a system
- for creating precise mounting channels in drywall for LED lighting fixtures (RAM-3035-KOZE)

Assembly

- embedding the "mounting channel" (RAM-3035-KOZE) in the surface of a drywall ceiling
- mounting the "core" of the lighting fixture (3035-O) in the "mounting channel" (RAM-3035-KOZE)

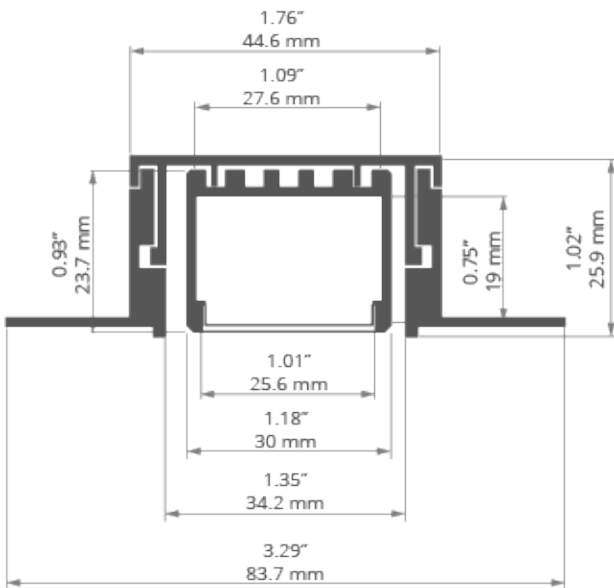
Additional information

- 3035-KOZE fixtures are designed for 2 LED tapes (10 mm wide) or 2 LED tapes (8 mm wide)
- the profile fits in the thickness of two drywall panels
- the lighting fixture is designed so that the "core" of the lighting fixture (profile with LED tapes, power supply, wires and end caps) can be prepared in advance, in factory conditions.
- The only thing to be done at the installation site is to insert the prepared "core" (3035-O) into the pre-installed mounting channel (RAM-3035-KOZE)
- two locking bolts must be used for every 1m of lighting fixture. For lighting fixtures shorter than 1m, at least 2 bolts must be used

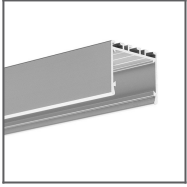
- the width of the gap in the drywall for (RAM-3035-KOZE): from 66 mm to 71 mm
- covers must be cut 2 mm shorter than the aluminum profiles on both ends (creating 2mm gaps on both ends of the lighting fixture)

Application	mounting extrusions
Specific features	compartment for power supply
Specific features	to cover with plaster
Finish	Non anodized (raw)
place of installation	indoor installation
Mounting method	recess mount
Mounting method	drywall
the possibility of bending	no

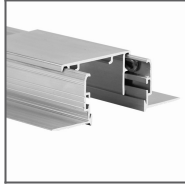
TECHNICAL DRAWING



RELATED PROFILES



3035-O Profile
Ref: B8441



RAM-3035-KOZE
Profile
Ref: 18056