

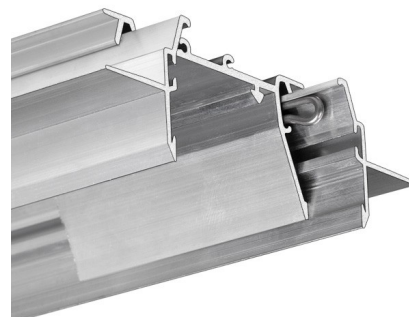
**PRODUCT DESCRIPTION**

The profile is part of the systems **MOD-TEK-50**.

**FINISH :**

Non anodized (raw) 

\*Custom colors available upon request



Fill empty fields

Product nr.	
Fixture type	
Company	
Job name	
Date	

**TECHNICAL SPECIFICATION**

**Additional information**

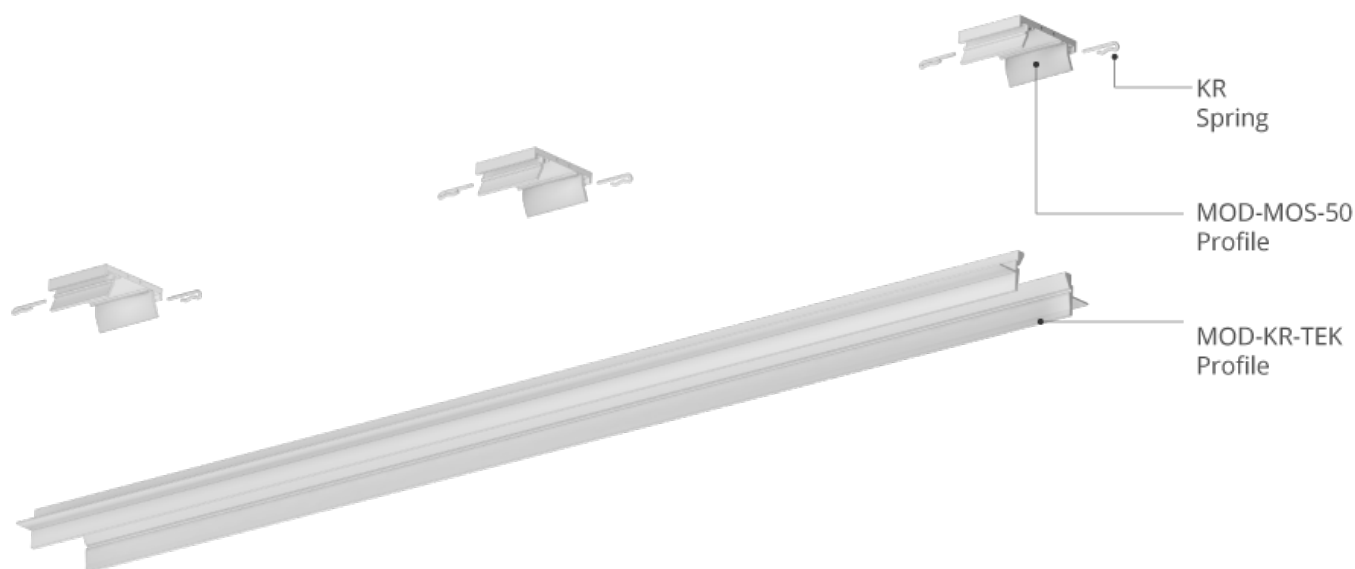
**Profile components: RAM-TEK-50**

```
.tg {border-collapse:collapse;border-spacing:0;} .tg td{font-family:Arial, sans-serif;font-size:14px;padding:10px 5px;border-style:solid;border-width:1px;overflow:hidden;word-break:normal;border-color:black;} .tg th{font-family:Arial, sans-serif;font-size:14px;font-weight:normal;padding:10px 5px;border-style:solid;border-width:1px;overflow:hidden;word-break:normal;border-color:black;} .tg .tg-baqh{text-align:center;vertical-align:top} .tg .tg-gqep{font-family:Verdana, Geneva, sans-serif !important;;text-align:left;vertical-align:top} .tg .tg-0lax{text-align:left;vertical-align:top} .tg {border-collapse:collapse;border-spacing:0;} .tg td{font-family:Arial, sans-serif;font-size:14px;padding:10px 5px;border-style:solid;border-width:1px;overflow:hidden;word-break:normal;border-color:black;} .tg th{font-family:Arial, sans-serif;font-size:14px;font-weight:normal;padding:10px 5px;border-style:solid;border-width:1px;overflow:hidden;word-break:normal;border-color:black;} .tg .tg-baqh{text-align:center;vertical-align:top} .tg .tg-gqep{font-family:Verdana, Geneva, sans-serif !important;;text-align:left;vertical-align:top} .tg .tg-0lax{text-align:left;vertical-align:top} .tg {border-collapse:collapse;border-spacing:0;} .tg td{border-color:black;border-style:solid;border-width:1px;font-family:Arial, sans-serif;font-size:14px; overflow:hidden;padding:10px 5px;word-break:normal;} .tg th{border-color:black;border-style:solid;border-width:1px;font-family:Arial, sans-serif;font-size:14px;font-weight:normal;overflow:hidden;padding:10px 5px;word-break:normal;} .tg .tg-zkvf{background-color:rgb(255, 255, 255);color:rgb(146, 146, 146);font-family:Tahoma, Geneva, sans-serif !important;; font-size:10px;font-weight:bold;text-align:left;vertical-align:top} .tg .tg-kngk{background-color:rgb(255, 255, 255);color:rgb(146, 146, 146);font-family:Tahoma, Geneva, sans-serif !important;; font-size:10px;text-align:left;vertical-align:top}
```

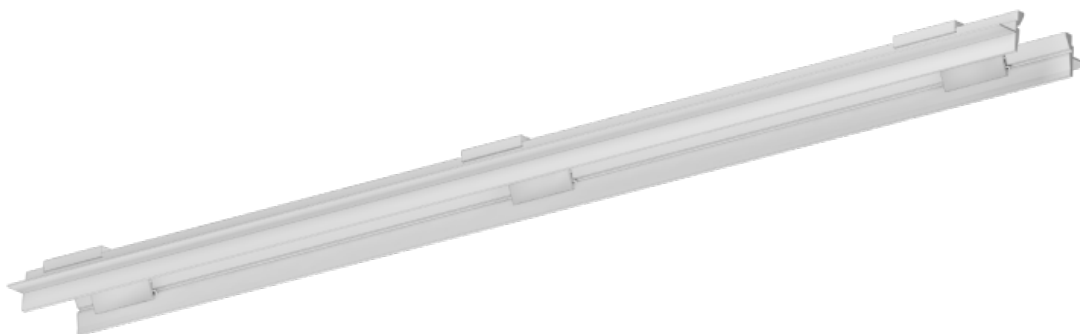
Name of the element	for length: 1 m	for length: 2 m	for length: 3 m
MOD-KR-TEK Profile	2 x 1 m	2 x 2 m	2 x 3 m
MOD-MOS-50 Profile	3 pcs.	5 pcs.	7 pcs.
KR Spring	6 pcs.	10 pcs.	14 pcs.
RAM-1 Spring	6 pcs.	10 pcs.	14 pcs.

\* For lengths longer than 3 m, please contact the sales department for more information regarding the amount of accessories needed.

### Scheme: RAM-TEK-50 Profile



### Assembling: : RAM-TEK-50

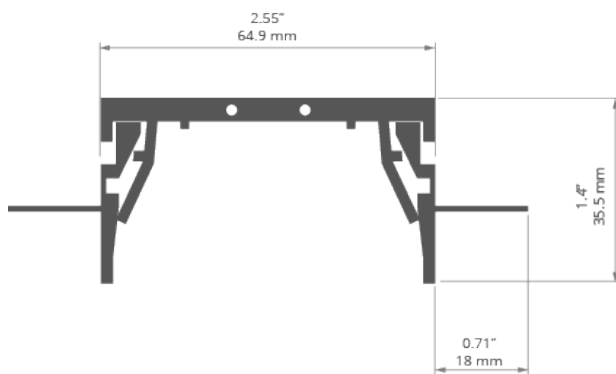


```
.tg {border-collapse:collapse;border-spacing:0;} .tg td{font-family:Arial, sans-serif;font-size:14px;padding:10px 5px;border-style:solid;border-width:1px;overflow:hidden;word-break:normal;border-color:black;} .tg th{font-family:Arial, sans-serif;font-size:14px;font-weight:normal;padding:10px 5px;border-style:solid;border-width:1px;overflow:hidden;word-break:normal;border-color:black;} .tg .tg-baqh{text-align:center;vertical-align:top} .tg .tg-gqep{font-family:Verdana, Geneva, sans-serif !important;;text-align:left;vertical-align:top} .tg .tg-0lax{text-align:left;vertical-align:top}
```

```
.tg {border-collapse:collapse;border-spacing:0;} .tg td{font-family:Arial, sans-serif;font-size:14px;padding:10px 5px;border-style:solid;border-width:1px;overflow:hidden;word-break:normal;border-color:black;} .tg th{font-family:Arial, sans-serif;font-size:14px;font-weight:normal;padding:10px 5px;border-style:solid;border-width:1px;overflow:hidden;word-break:normal;border-color:black;} .tg .tg-baqh{text-align:center;vertical-align:top} .tg .tg-gqep{font-family:Verdana, Geneva, sans-serif !important;;text-align:left;vertical-align:top} .tg .tg-0lax{text-align:left;vertical-align:top}
```

**AVAILABLE LENGTHS**

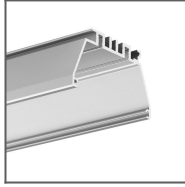
Ref. nr.	surface finish	available lengths
18059NA_1	Non anodized (raw)	1000 mm
18059NA_2	Non anodized (raw)	2000 mm
18059NA_3	Non anodized (raw)	3000 mm

**TECHNICAL DRAWING**

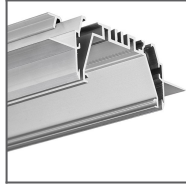
**RELATED PROFILES**



MOD-MOS-50  
Profile  
Ref: C1773



OMODO-50 Profile  
Ref: 18053



Profile system  
MOD-TEK-50  
Ref: 18059 (RAM-  
TEK-50) + 18053  
(OMODO-50)

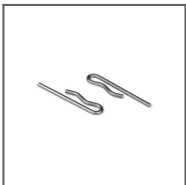
**RELATED PRODUCTS**

**END CAPS**



RAM-TEZE-50  
grey end cap  
Ref: 24350

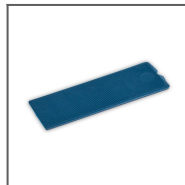
**ACCESSORIES**



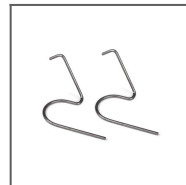
KR Spring  
Ref: 42737



KR Tool  
Ref: 70449



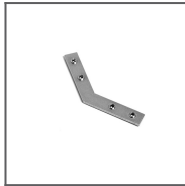
Mounting wedge  
Ref: 70397



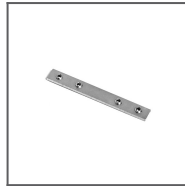
RAM-1 Spring  
Ref: 42738



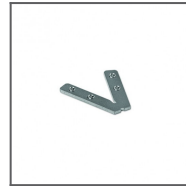
ZM-NA-120  
Connector  
Ref: 42729



ZM-NA-135  
Connector  
Ref: 42725



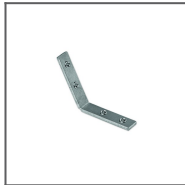
ZM-NA-180  
Connector  
Ref: 42724



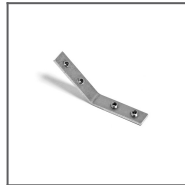
ZM-NA-45  
Connector  
Ref: 42339



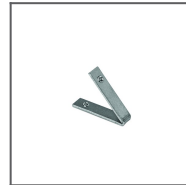
ZM-NA-90  
Connector  
Ref: 42723



ZM-NA-PION-120  
Connector  
Ref: 42321



ZM-NA-PION-135  
Connector  
Ref: 42727



ZM-NA-PION-45  
Connector  
Ref: 42315



ZM-NA-PION-60  
Connector  
Ref: 42317



ZM-NA-PION-90  
Connector  
Ref: 42726