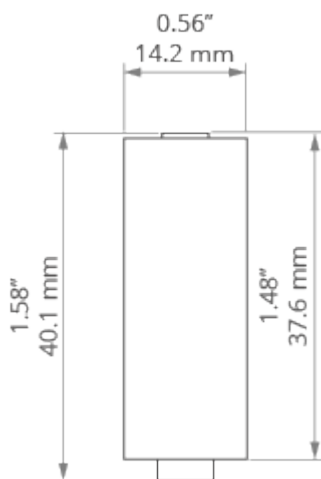


PRODUCT DESCRIPTION

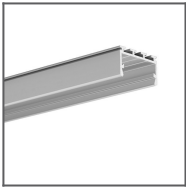
Fastener with increased load capacity, used for hanging fixtures on a steel cable. In addition, it can be used as a connection for one pole of electricity as the [steel cable with Cu core](#) can be conductive. Mounted in the guide (small lock) of the selected profile. The power cable can be inserted through the hole drilled in the extrusion and further through the channel in the fastener

Fill empty fields

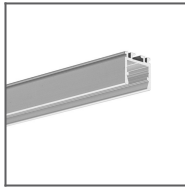
Product nr.	
Fixture type	
Company	
Job name	
Date	

**TECHNICAL SPECIFICATION****TECHNICAL DRAWING**

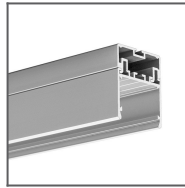
RELATED PROFILES



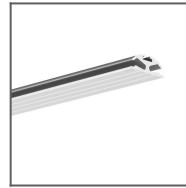
GIZA-LL profile
Ref: C0758



OPK-4 Profile
Ref: C0370



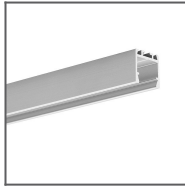
3035 Profile
Ref: 18039



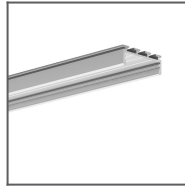
JAZ Profile
Ref: B8547



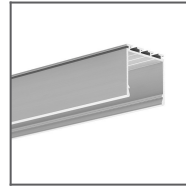
OLEK Profile
Ref: B8505



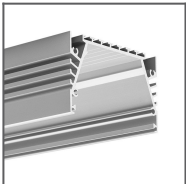
PDS-ZM Profile
Ref: B7696



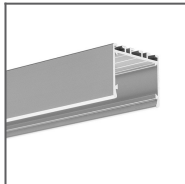
GIZA Profile
Ref: B5556



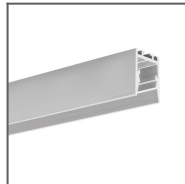
LIPOD Profile
Ref: B5554



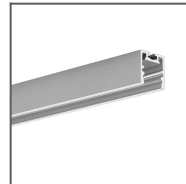
SEPOD Profile
Ref: B6593



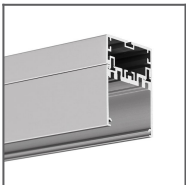
3035-O Profile
Ref: B8441



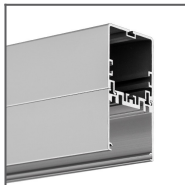
PDS-ZMG Profile
Ref: C1418



PDS-ZM-PLUS
Profile
Ref: C2056



4050 Profile
Ref: 18050



4050-W Profile
Ref: 18051

RELATED PRODUCTS

ACCESSORIES



Steel cable with
Cu Fl 0.95 mm
core
Ref: 70240

MARKETING MATERIALS



Display
P230-90109M
Ref: 90109M