

PRODUCT DESCRIPTION

Fastener with increased load capacity, used for hanging fixtures on a steel cable. In addition, it can be used as a connection for one pole of electricity as the [steel cable with Cu core](#) can be conductive. Mounted in the guide (large lock) of the selected profile. The power cable can be inserted through the hole drilled in the extrusion and further through the channel in the fastener

Fill empty fields

Product nr.

Fixture type

Company

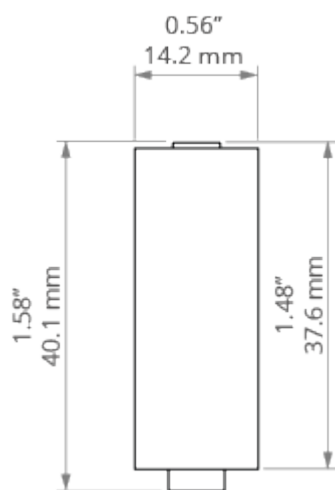
Job name

Date

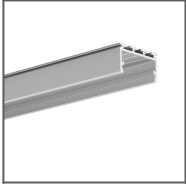


TECHNICAL SPECIFICATION

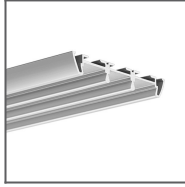
TECHNICAL DRAWING



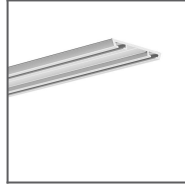
RELATED PROFILES



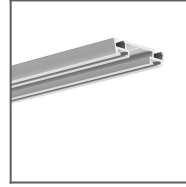
GIZA-LL profile
Ref: C0758



TRIADA Profile
Ref: B4476



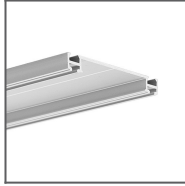
TEST-36 Profile
Ref: B6639



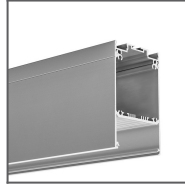
TEST-74 Profile
Ref: W4507



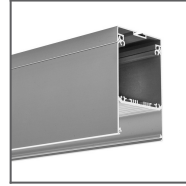
TETRA-43 Profile
Ref: W4476



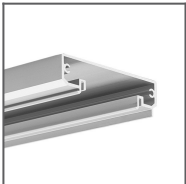
TETRA-78 Profile
Ref: W4508



DES Profile
Ref: 18030



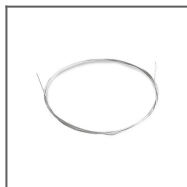
GLADES Profile
Ref: 18036



TESPO Profile
Ref: 18020

RELATED PRODUCTS

ACCESSORIES



Steel cable with
Cu Fl 0.95 mm
core
Ref: 70240

MARKETING MATERIALS



Display
P230-90071M
Ref: 90071M