

PRODUCT DESCRIPTION

- Well stabilized profile connections
- Possibility of building lighting fixtures with polygonal shapes

Fill empty fields

Product nr.	
Fixture type	
Company	
Job name	
Date	



TECHNICAL SPECIFICATION

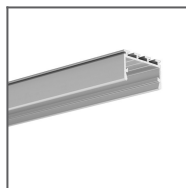
Application

FOR JOINING ANODIZED PROFILES, equipped with a ZM socket at 45, 60, 90, 120, 135, 180 degrees. They also give the possibility of creating T-, X-, Y-shaped fixtures from profiles equipped with 3 ZM sockets.

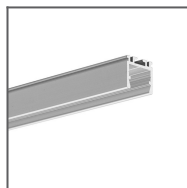
Assembly

With pressure screws.

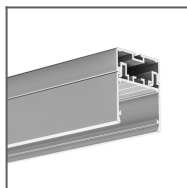
RELATED PROFILES



GIZA-LL profile
Ref: C0758



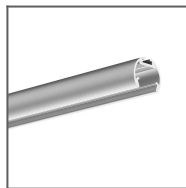
OPK-4 Profile
Ref: C0370



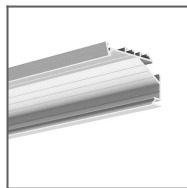
3035 Profile
Ref: 18039



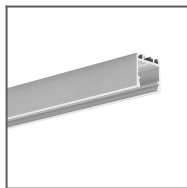
JAZ Profile
Ref: B8547



OLEK Profile
Ref: B8505



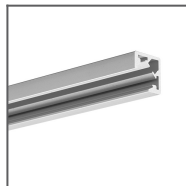
KOPRO-30 Profile
Ref: B7890



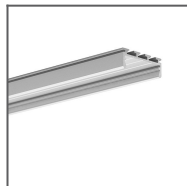
PDS-ZM Profile
Ref: B7696



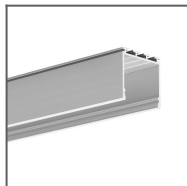
GLAD-45 Profile
Ref: B7009



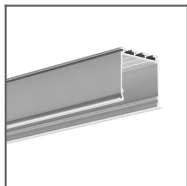
KUBIK-45 Profile
Ref: B7697



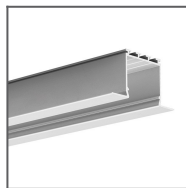
GIZA Profile
Ref: B5556



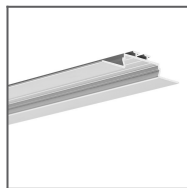
LIPOD Profile
Ref: B5554



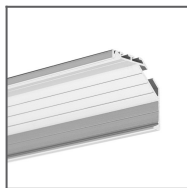
LOKOM Profile
Ref: B5553



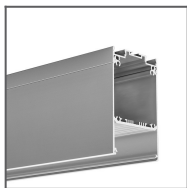
LARKO Profile
Ref: B5552



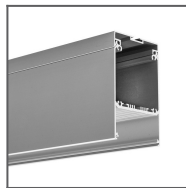
OPAC-30 Profile
Ref: B6164



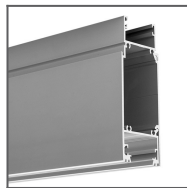
KOPRO Profile
Ref: B6367



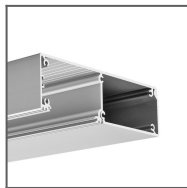
DES Profile
Ref: 18030



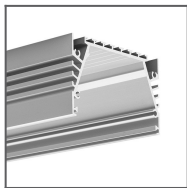
GLADES Profile
Ref: 18036



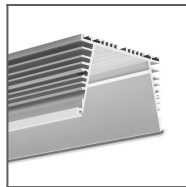
KIDES-DUO Profile
Ref: 18032



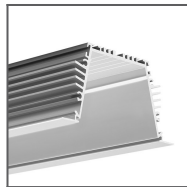
KIDES Profile
Ref: 18031



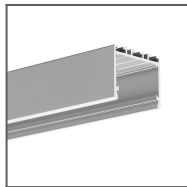
SEPOD Profile
Ref: B6593



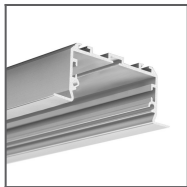
SEKOMA Profile
Ref: B6595



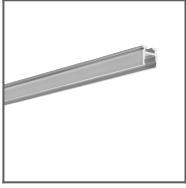
SEKODU Profile
Ref: B6597



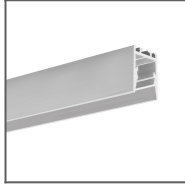
3035-O Profile
Ref: B8441



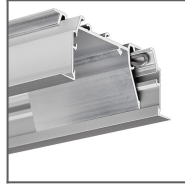
LARKO-50 Profile
Ref: C0756



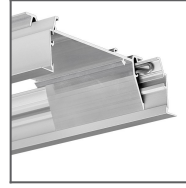
PIKO-ZM Profile
Ref: C1168



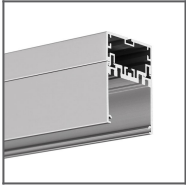
PDS-ZMG Profile
Ref: C1418



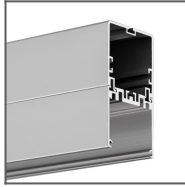
RAM-KOL-50
Profile
Ref: 18060



RAM-KOL-100
Profile
Ref: 18062



4050 Profile
Ref: 18050



4050-W Profile
Ref: 18051