

PRODUCT DESCRIPTION

- ADJUSTABLE ANGLE BETWEEN PROFILES
- Possibility of building lighting fixtures with polygonal shapes
- Well stabilized profile connections

Fill empty fields

Product nr.	
Fixture type	
Company	
Job name	
Date	



TECHNICAL SPECIFICATION

Application

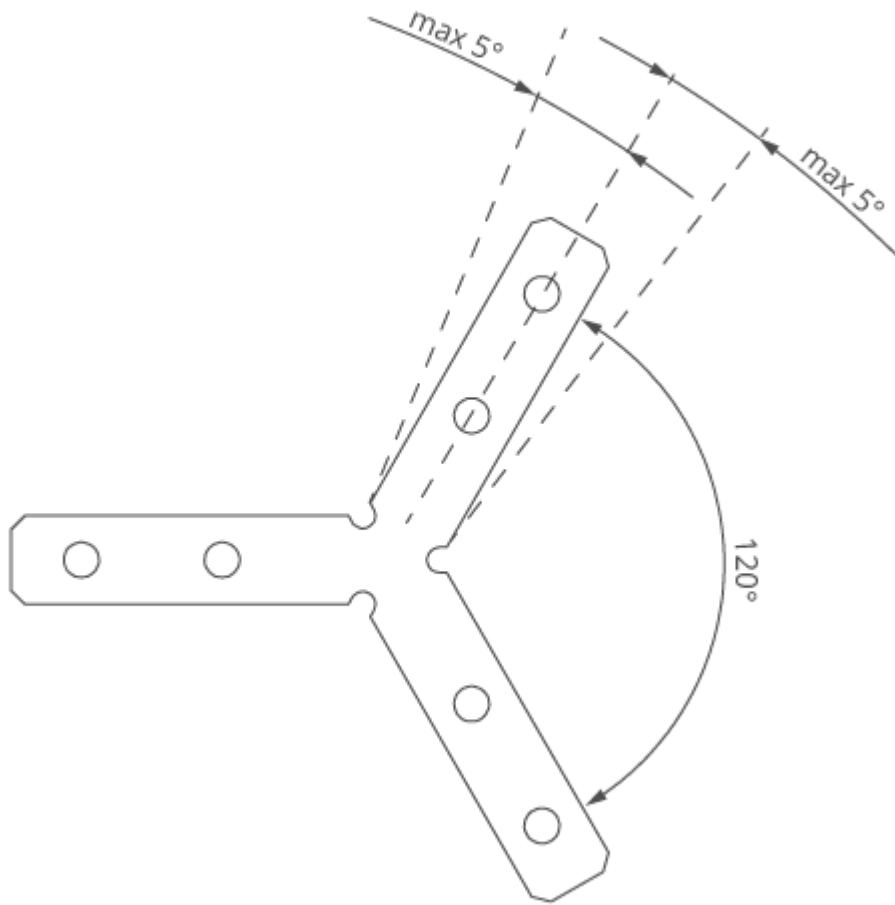
The product is used to create Y120 fittings from anodized profiles equipped with at least one ZM socket in the bottom of the profile. In addition, it allows you to correct the angle between profiles in the range of +/- 5 degrees.

Assembly

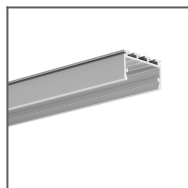
With pressure screws.

Additional information

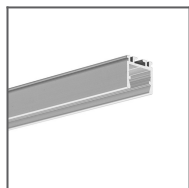
If the angle between the connected lighting fixtures is other than nominal, it can be bent to the desired value by 5 degrees on each side.



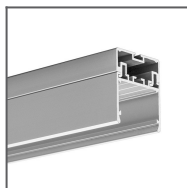
RELATED PROFILES



GIZA-LL profile
Ref: C0758



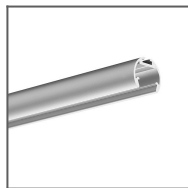
OPK-4 Profile
Ref: C0370



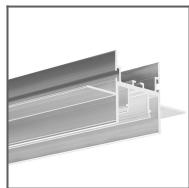
3035 Profile
Ref: 18039



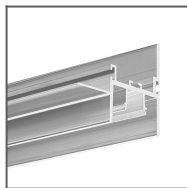
JAZ Profile
Ref: B8547



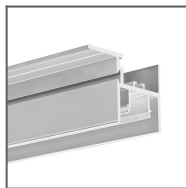
OLEK Profile
Ref: B8505



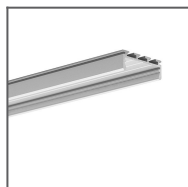
FOLED Profile
Ref: B8332V1



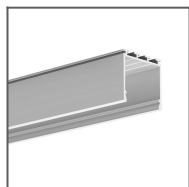
FOLED-BOK
profile
Ref: B8334V1



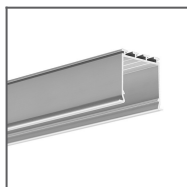
FOLED-SUF Profile
Ref: B8333V1



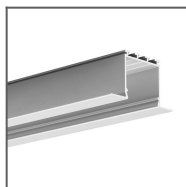
GIZA Profile
Ref: B5556



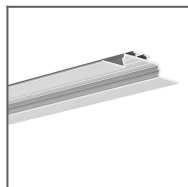
LIPOD Profile
Ref: B5554



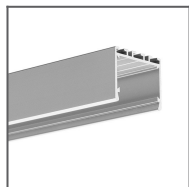
LOKOM Profile
Ref: B5553



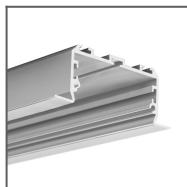
LARKO Profile
Ref: B5552



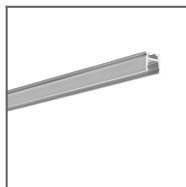
OPAC-30 Profile
Ref: B6164



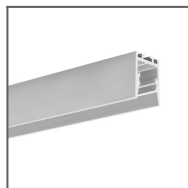
3035-O Profile
Ref: B8441



LARKO-50 Profile
Ref: C0756



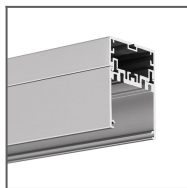
PIKO-ZM Profile
Ref: C1168



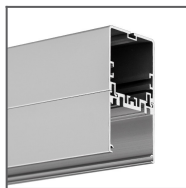
PDS-ZMG Profile
Ref: C1418



PDS-ZM-PLUS
Profile
Ref: C2056



4050 Profile
Ref: 18050



4050-W Profile
Ref: 18051