

## PRODUCT DESCRIPTION

- ADJUSTABLE ANGLE BETWEEN PROFILES
- Possibility of building lighting fixtures with polygonal shapes
- Well stabilized profile connections

Fill empty fields

Product nr.	
Fixture type	
Company	
Job name	
Date	



## TECHNICAL SPECIFICATION

### Application

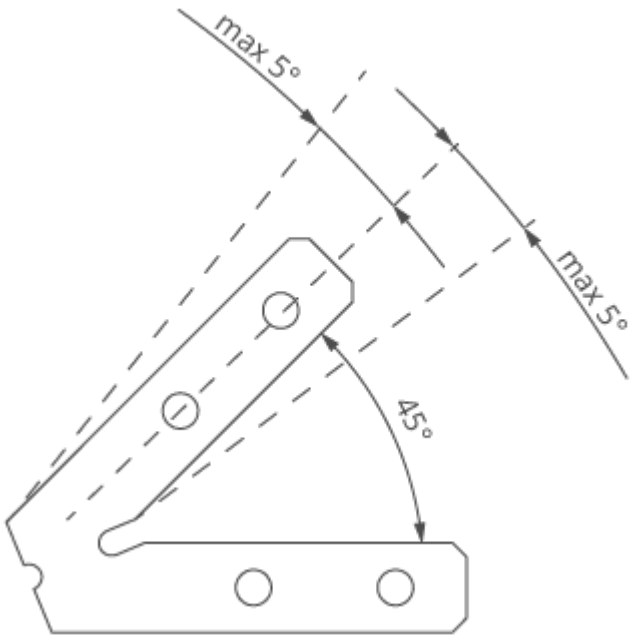
The product is used to connect anodized profiles from the KLUŚ offer, equipped with a ZM socket at an angle of 45 degrees with a tolerance of +/- 5 degrees. They also give the possibility of creating T-, X-, Y-shaped fixtures from profiles equipped with 3 ZM sockets.

### Assembly

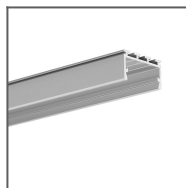
With pressure screws.

### Additional information

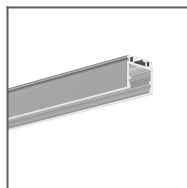
If the angle between the connected lighting fixtures is other than nominal, it can be bent to the desired value by 5 degrees on each side.



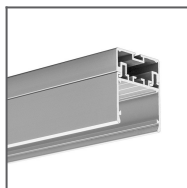
**RELATED PROFILES**



GIZA-LL profile  
Ref: C0758



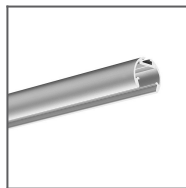
OPK-4 Profile  
Ref: C0370



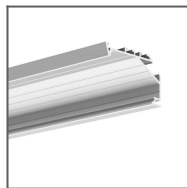
3035 Profile  
Ref: 18039



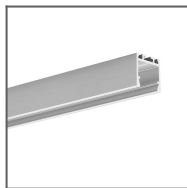
JAZ Profile  
Ref: B8547



OLEK Profile  
Ref: B8505



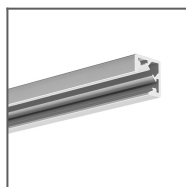
KOPRO-30 Profile  
Ref: B7890



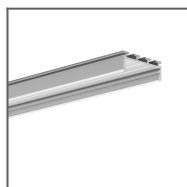
PDS-ZM Profile  
Ref: B7696



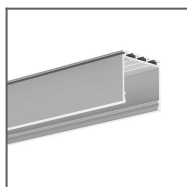
GLAD-45 Profile  
Ref: B7009



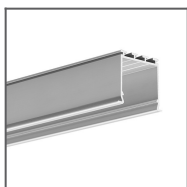
KUBIK-45 Profile  
Ref: B7697



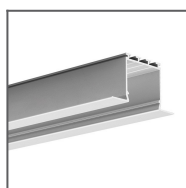
GIZA Profile  
Ref: B5556



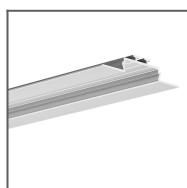
LIPOD Profile  
Ref: B5554



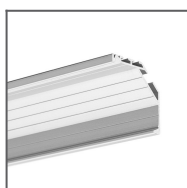
LOKOM Profile  
Ref: B5553



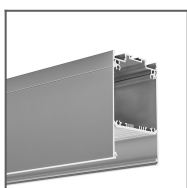
LARKO Profile  
Ref: B5552



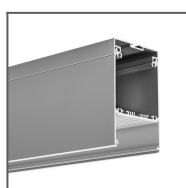
OPAC-30 Profile  
Ref: B6164



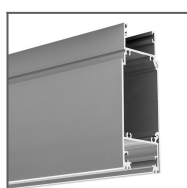
KOPRO Profile  
Ref: B6367



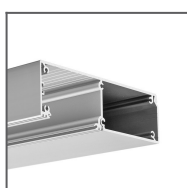
DES Profile  
Ref: 18030



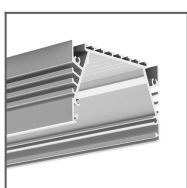
GLADES Profile  
Ref: 18036



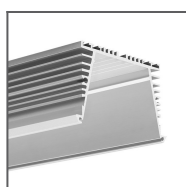
KIDES-DUO Profile  
Ref: 18032



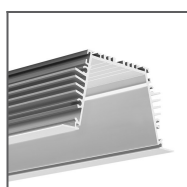
KIDES Profile  
Ref: 18031



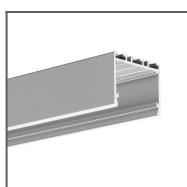
SEPOD Profile  
Ref: B6593



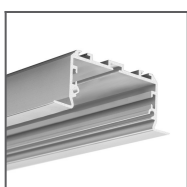
SEKOMA Profile  
Ref: B6595



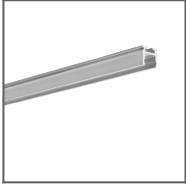
SEKODU Profile  
Ref: B6597



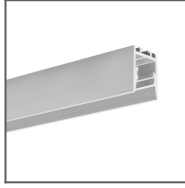
3035-O Profile  
Ref: B8441



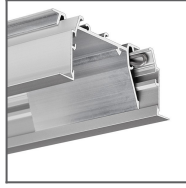
LARKO-50 Profile  
Ref: C0756



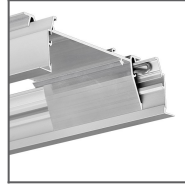
PIKO-ZM Profile  
Ref: C1168



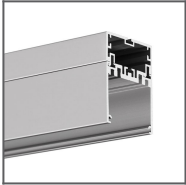
PDS-ZMG Profile  
Ref: C1418



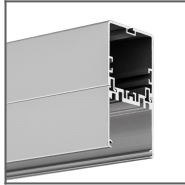
RAM-KOL-50  
Profile  
Ref: 18060



RAM-KOL-100  
Profile  
Ref: 18062



4050 Profile  
Ref: 18050



4050-W Profile  
Ref: 18051