

## PRODUCT DESCRIPTION

- Smooth adjustment of the suspension height at the lighting fixture
- Suspension of the lighting fixture in an inclined position
- Easy installation
- Possibility to select any wire length

Fill empty fields

Product nr.

Fixture type

Company

Job name

Date



## TECHNICAL SPECIFICATION

### Application

- for suspending linear LED lighting fixtures in an inclined position.

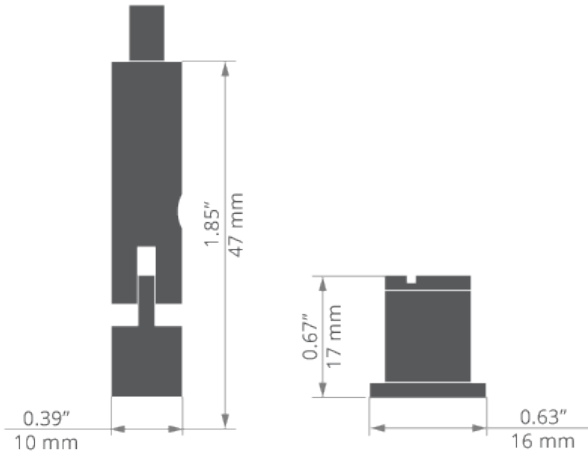
### Assembly

- ceiling installation using ceiling brackets with fi-5 mounting hole,
- attached to the profile without tools,
- RD-4 mounting with bottom adjustment at the LED lighting fixture using a wire lock and a hook,
- locks remain vertical even with different lengths of wires (with a inclined lighting fixture).

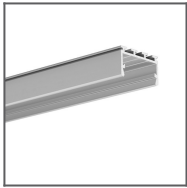
### Additional information

- different color versions are available.

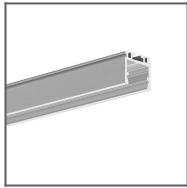
## TECHNICAL DRAWING



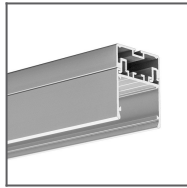
**RELATED PROFILES**



GIZA-LL profile  
Ref: C0758



OPK-4 Profile  
Ref: C0370



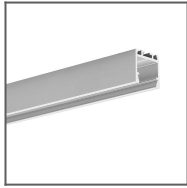
3035 Profile  
Ref: 18039



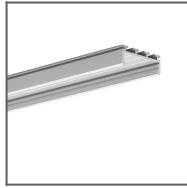
JAZ Profile  
Ref: B8547



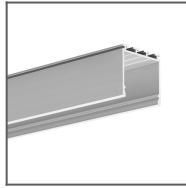
OLEK Profile  
Ref: B8505



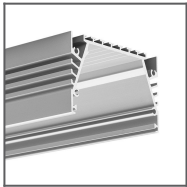
PDS-ZM Profile  
Ref: B7696



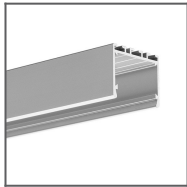
GIZA Profile  
Ref: B5556



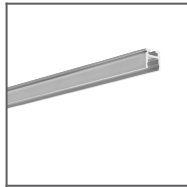
LIPOD Profile  
Ref: B5554



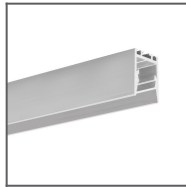
SEPOD Profile  
Ref: B6593



3035-O Profile  
Ref: B8441



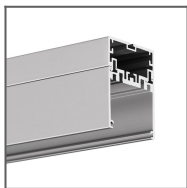
PIKO-ZM Profile  
Ref: C1168



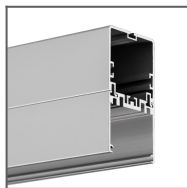
PDS-ZMG Profile  
Ref: C1418



PDS-ZM-PLUS  
Profile  
Ref: C2056



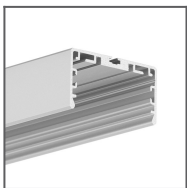
4050 Profile  
Ref: 18050



4050-W Profile  
Ref: 18051



GIZA-DUO-LL  
Profile  
Ref: C2162



Profile LIPOD-50  
Ref: C2609

RELATED PRODUCTS

ACCESSORIES



Steel wire FI-1 1m  
Ref: 1397