

PRODUCT DESCRIPTION

FINISH :

Non anodized (raw) 

*Custom colors available upon request

Fill empty fields

Product nr.

Fixture type

Company

Job name

Date



TECHNICAL SPECIFICATION

Application

For the KIDES-DUO profile sealed up to IP54

Assembly

- mounted in the LED chamber of the main extrusion

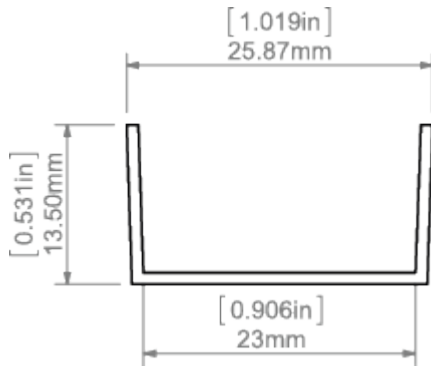
Additional information

- spece for LED strip: 23 mm

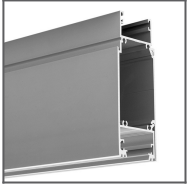
AVAILABLE LENGTHS

Ref. nr.	surface finish	available lengths
B7827NA_1	Non anodized (raw)	1000 mm
B7827NA_2	Non anodized (raw)	2000 mm
B7827NA_3	Non anodized (raw)	3000 mm

TECHNICAL DRAWING



RELATED PROFILES



KIDES-DUO Profile
Ref: 18032