

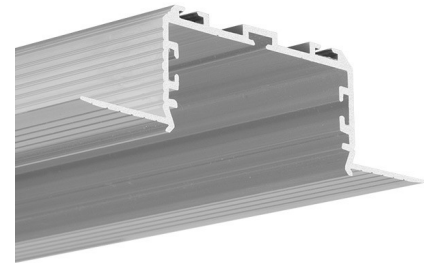
## PRODUCT DESCRIPTION

- Designed to reach an IP65 waterproof rating
- Line of light
- Concealed aluminum elements

### FINISH :

Non anodized (raw) 

\*Custom colors available upon request



Fill empty fields

Product nr.

Fixture type

Company

Job name

Date

## TECHNICAL SPECIFICATION

### Application

- for creating a line of light flush with the surface of walls and ceilings

### Assembly

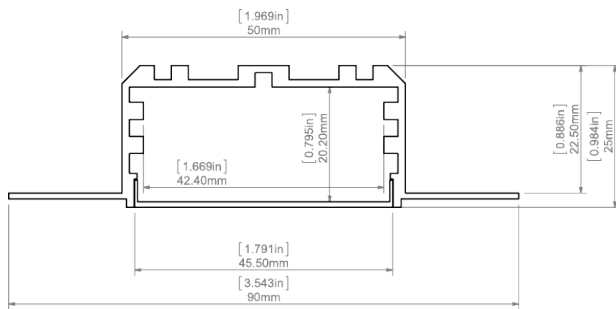
- fixed in the groove with mounting adhesive
- profile fastening wings covered with gypsum plaster
- the protective insert TECH-50 ensures that the profile slot remains wide enough for the snap-in cover (its use is necessary during mounting and finishing works)

### Additional information

- possibility of making a linear fixture with IP65 protection, which means the fixture is dustproof and waterproof in contact with water jets
- designed for up to four 10 mm wide LED strips
- line of light obtainable with the LIGER-50 cover and LED strips with a minimum of 120 LED/m
- the cover is evenly illuminated with four LED strips, with fewer strips shadows appear on the cover
- the KOZEL-50 profile is equipped with ZM sockets (ZM Connectors are used to connect profiles lengthwise, they are easily accessible even after mounting the profile in the ceiling)
- the groove cut out in the drywall to accommodate the profile should be 51mm - 56mm wide
- when mounted in double drywall, the profile does not interfere with the structure

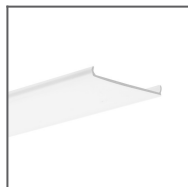
## AVAILABLE LENGTHS

Ref. nr.	surface finish	available lengths
C0757NA_1	Non anodized (raw)	1000 mm
C0757NA_2	Non anodized (raw)	2000 mm
C0757NA_3	Non anodized (raw)	3000 mm

**TECHNICAL DRAWING**

**RELATED PRODUCTS**

**COVERS**



LIGER-50 frosted  
Cover  
Ref: 17086

**END CAPS**

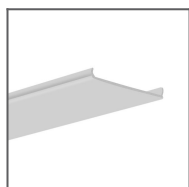


KOZEL-50 grey  
End cap  
Ref: 24280

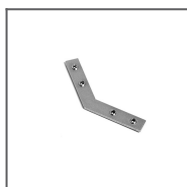
**ACCESSORIES**



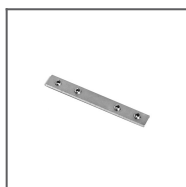
Gland 6,4x3  
Ref: 42264



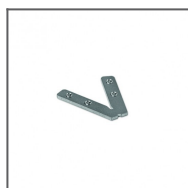
TECH-50  
protective insert  
Ref: 17125



ZM-NA-135  
Connector  
Ref: 42725



ZM-NA-180  
Connector  
Ref: 42724



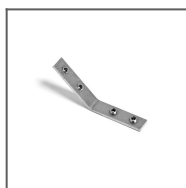
ZM-NA-45  
Connector  
Ref: 42339



ZM-NA-90  
Connector  
Ref: 42723



ZM-NA-PION-120  
Connector  
Ref: 42321



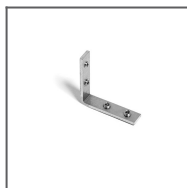
ZM-NA-PION-135  
Connector  
Ref: 42727



ZM-NA-PION-45  
Connector  
Ref: 42315



ZM-NA-PION-60  
Connector  
Ref: 42317



ZM-NA-PION-90  
Connector  
Ref: 42726

MARKETING MATERIALS



Foam 70265  
Ref: 70265