

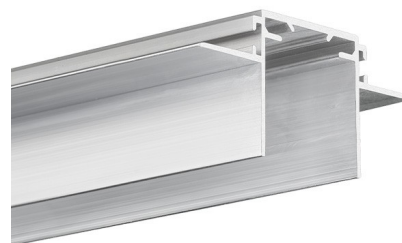
PRODUCT DESCRIPTION

- Possibility to be connected into lines and polygons thanks to ZM connectors
- Creating precise installation channels in drywall for LED lighting fixtures

FINISH :

Non anodized (raw) 

*Custom colors available upon request



Fill empty fields

Product nr.	
Fixture type	
Company	
Job name	
Date	

TECHNICAL SPECIFICATION

Application

- for the construction of precise installation channels in walls and ceilings made of 16 mm thick drywall
- for mounting architectural profiles which are compatible with it
- for mounting easily serviceable recessed lighting fixtures

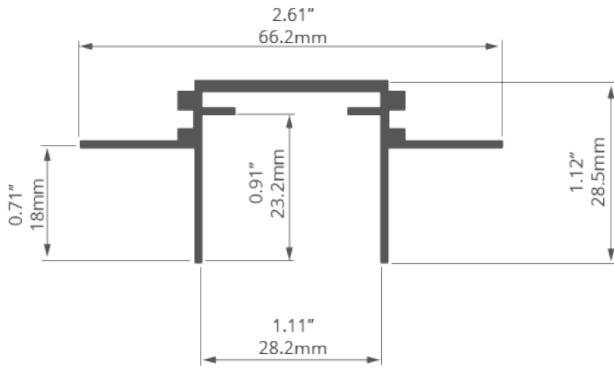
Assembly

- using screws properly selected for the type of surface
- TEKUS-ZM profiles are installed simultaneously with the construction of drywall walls and ceilings

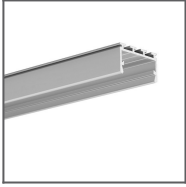
AVAILABLE LENGTHS

Ref. nr.	surface finish	available lengths
C1293NA_1	Non anodized (raw)	1000 mm
C1293NA_2	Non anodized (raw)	2000 mm
C1293NA_3	Non anodized (raw)	3000 mm

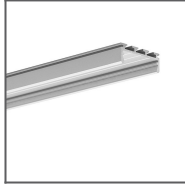
TECHNICAL DRAWING



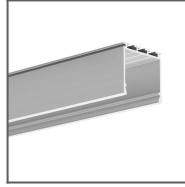
RELATED PROFILES



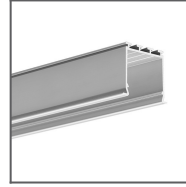
GIZA-LL profile
Ref: C0758



GIZA Profile
Ref: B5556



LIPOD Profile
Ref: B5554



LOKOM Profile
Ref: B5553

RELATED PRODUCTS

END CAPS

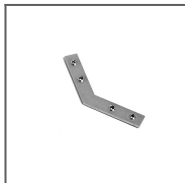


TEKUS-ZM grey
End cap
Ref: 24313

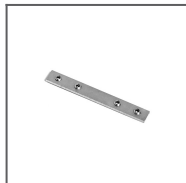
ACCESSORIES



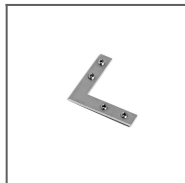
TEKNIK Latch
Ref: 24003



ZM-NA-135
Connector
Ref: 42725



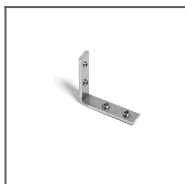
ZM-NA-180
Connector
Ref: 42724



ZM-NA-90
Connector
Ref: 42723



ZM-NA-PION-135
Connector
Ref: 42727



ZM-NA-PION-90
Connector
Ref: 42726

MARKETING MATERIALS



Presentation set 2
Ref: 90052