

PRODUCT DESCRIPTION

The profile is part of the system [3035-KOZE](#).

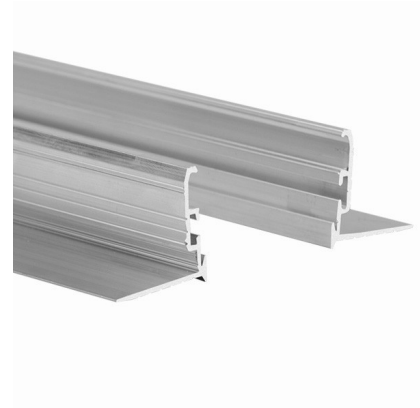
FINISH :

Non anodized (raw) 

*Custom colors available upon request

Fill empty fields

Product nr.	
Fixture type	
Company	
Job name	
Date	



TECHNICAL SPECIFICATION

Application

- for the construction of professional lighting fixtures with a cover mounted flush with the ceiling or wall surface
- for LED lighting fixtures recessed in the ceiling, installed and serviced as a system
- for creating precise mounting channels in drywall for LED lighting fixtures

Assembly

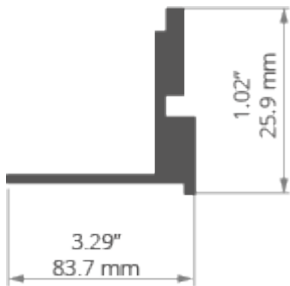
- embedding the "mounting channel" (RAM-3035-KOZE) in the surface of a drywall ceiling
- mounting the "core" of the lighting fixture (3035-OMODO) in the "mounting channel" (RAM-3035-KOZE)

Additional information

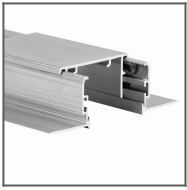
- 3035-KOZE fixtures are designed for 2 LED tapes (10 mm wide) or 2 LED tapes (8 mm wide)
- the profile fits in the thickness of two drywall panels
- the lighting fixture is designed so that the "core" of the lighting fixture (profile with LED tapes, power supply, wires and end caps) can be prepared in advance, in factory conditions.
The only thing to be done at the installation site is to insert the prepared "core" (3035-OMODO) into the pre-installed mounting channel (RAM-3035-KOZE)
- two locking bolts must be used for every 1m of lighting fixture. For lighting fixtures shorter than 1m, at least 2 bolts
- covers must be cut 2 mm shorter than the aluminum profiles on both ends (creating 2mm gaps on both ends of the lighting fixture)

AVAILABLE LENGTHS

Ref. nr.	surface finish	available lengths
C1780NA_1	Non anodized (raw)	1000 mm
C1780NA_2	Non anodized (raw)	2000 mm
C1780NA_3	Non anodized (raw)	3000 mm

TECHNICAL DRAWING

RELATED PROFILES



RAM-3035-KOZE
Profile
Ref: 18056