

## PRODUCT DESCRIPTION

- ADJUSTABLE ANGLE BETWEEN PROFILES
- Possibility of building lighting fixtures with polygonal shapes
- Well stabilized profile connections

Fill empty fields

Product nr.

Fixture type

Company

Job name

Date



## TECHNICAL SPECIFICATION

### Application

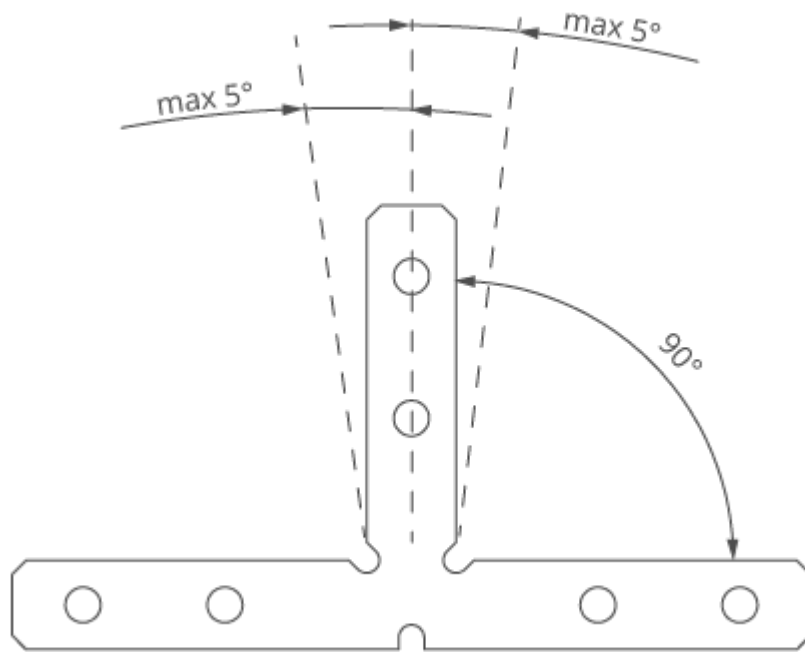
The product is used to create T90 fittings from anodized profiles equipped with at least one ZM socket in the bottom of the profile. In addition, it allows you to correct the angle between profiles in the range of +/- 5 degrees.

### Assembly

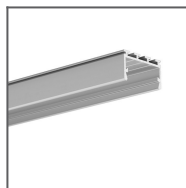
With pressure screws.

### Additional information

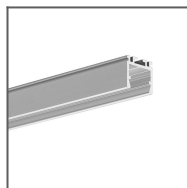
If the angle between the connected lighting fixtures is other than nominal, it can be bent to the desired value by 5 degrees on each side.



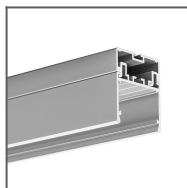
**RELATED PROFILES**



GIZA-LL profile  
Ref: C0758



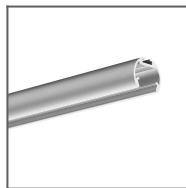
OPK-4 Profile  
Ref: C0370



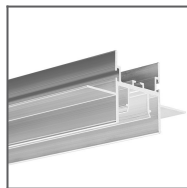
3035 Profile  
Ref: 18039



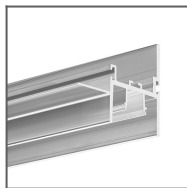
JAZ Profile  
Ref: B8547



OLEK Profile  
Ref: B8505



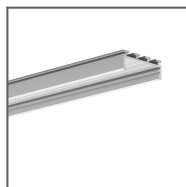
FOLED Profile  
Ref: B8332V1



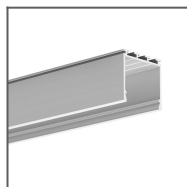
FOLED-BOK  
profile  
Ref: B8334V1



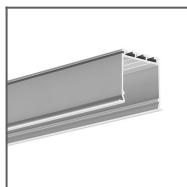
FOLED-SUF Profile  
Ref: B8333V1



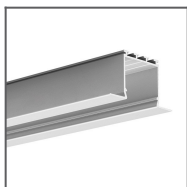
GIZA Profile  
Ref: B5556



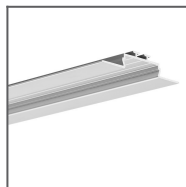
LIPOD Profile  
Ref: B5554



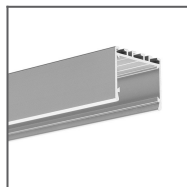
LOKOM Profile  
Ref: B5553



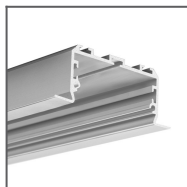
LARKO Profile  
Ref: B5552



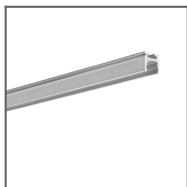
OPAC-30 Profile  
Ref: B6164



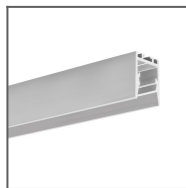
3035-O Profile  
Ref: B8441



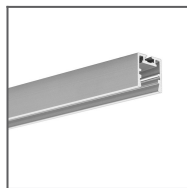
LARKO-50 Profile  
Ref: C0756



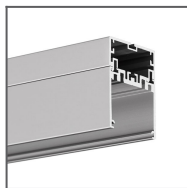
PIKO-ZM Profile  
Ref: C1168



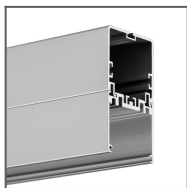
PDS-ZMG Profile  
Ref: C1418



PDS-ZM-PLUS  
Profile  
Ref: C2056



4050 Profile  
Ref: 18050



4050-W Profile  
Ref: 18051