

## PRODUCT DESCRIPTION

- Cover dedicated to creating a line of light
- Suited for LIPOD profiles group (for example LIPOD, LARKO, LOKOM, LESTO, KOZEL, KOZUS)
- We recommend it to be used with bent extrusions
- Very good light diffusion

Fill empty fields

Product nr.

Fixture type

Company

Job name

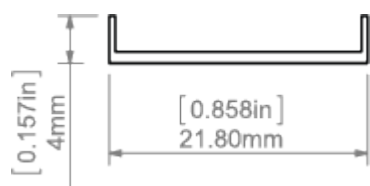
Date



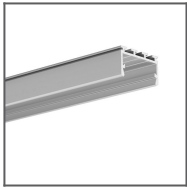
## TECHNICAL SPECIFICATION

Material	PC
Available length	1000 mm, 2000 mm, 3000 mm
UV resistance	increased

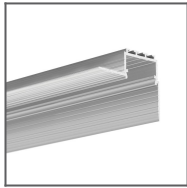
## TECHNICAL DRAWING



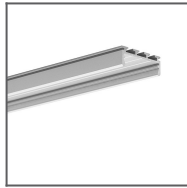
**RELATED PROFILES**



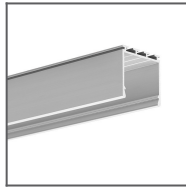
GIZA-LL profile  
Ref: C0758



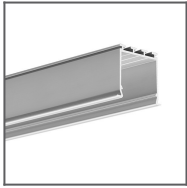
KOZUS-CR Profile  
Ref: C0600



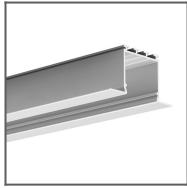
GIZA Profile  
Ref: B5556



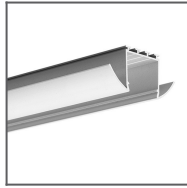
LIPOD Profile  
Ref: B5554



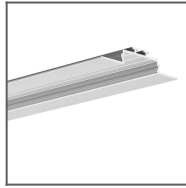
LOKOM Profile  
Ref: B5553



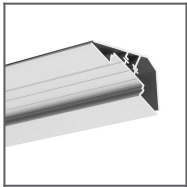
LARKO Profile  
Ref: B5552



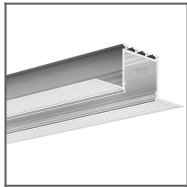
LESTO Profile  
Ref: B5551



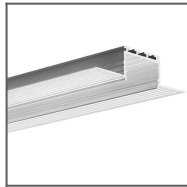
OPAC-30 Profile  
Ref: B6164



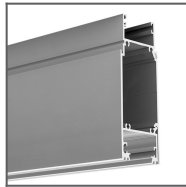
LOC-30 Profile  
Ref: 18015



KOZEL Profile  
Ref: B6454



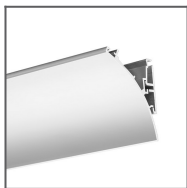
KOZUS Profile  
Ref: B7823



KIDES-DUO Profile  
Ref: 18032



STEPUS Profile  
Ref: 18038



WERKIN Profile  
Ref: 18025